



V E N E Z A
collection

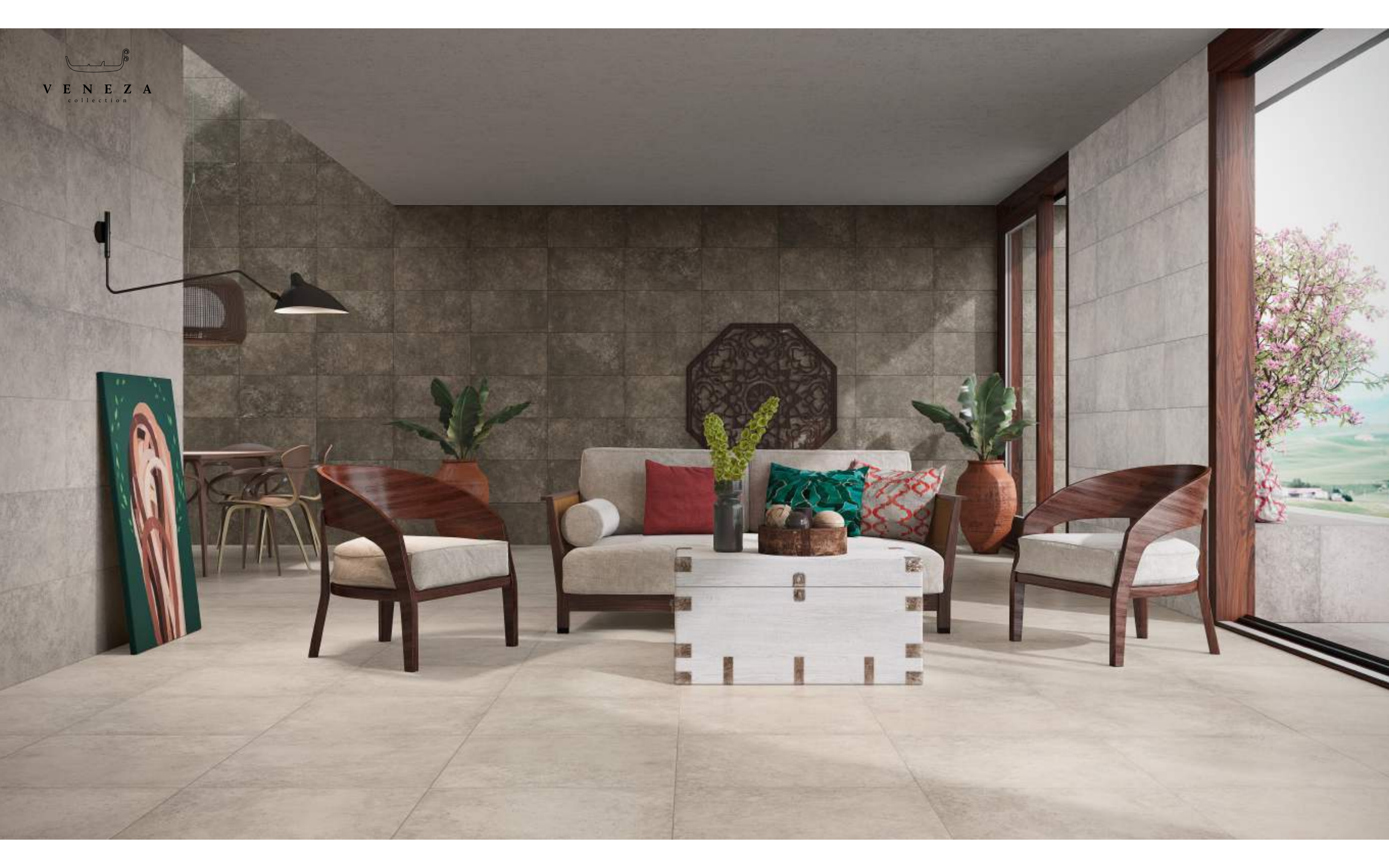




V E N E Z A
collection

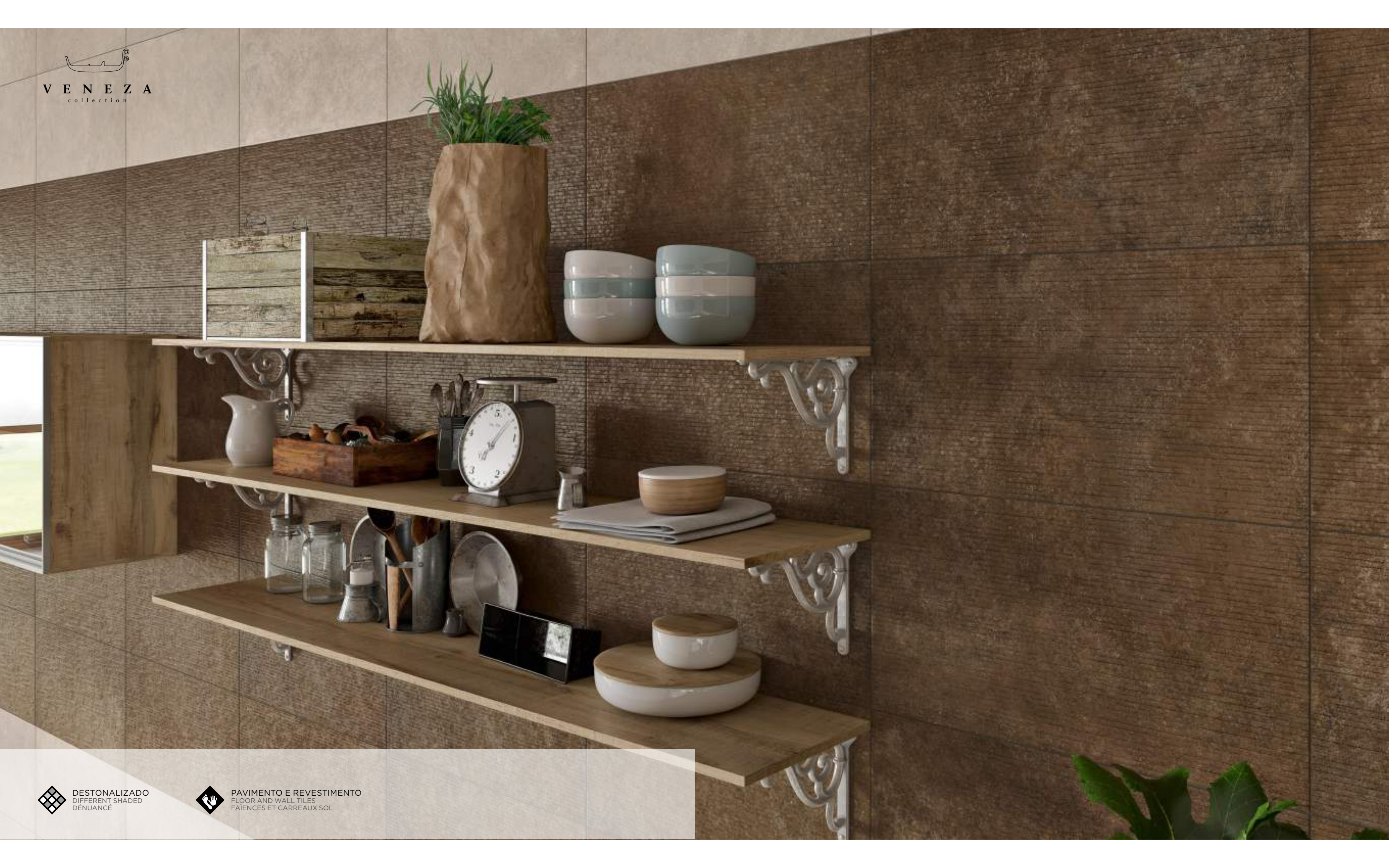


CLIPER
cerámica









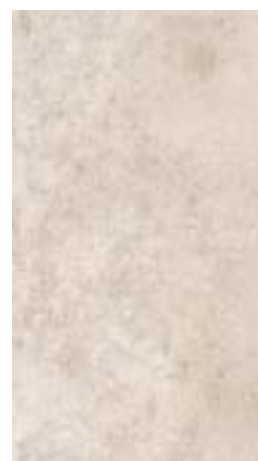
V E N E Z A
collection

branco

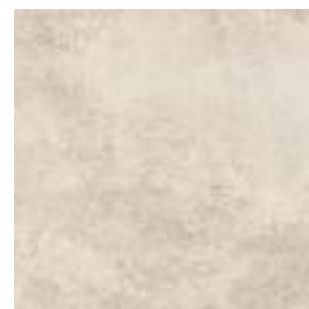
60 x 60 x 0,95 cm | 33 x 60 x 0,95 cm | 40 x 40 x 0,72 cm



Branco
60 x 60 - 6060VE00C04 S14
59 x 59 - 6060VE00C04 R S19
59 x 59 - 6060VE00C04 R/SP S20



Branco
33 x 60 - 3360VE00C04 S12
32 x 59 - 3360VE00C04 R S18
32 x 59 - 3360VE00C04 R/SP S19



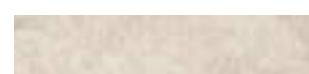
Branco
40 x 40 - 4040VE00C00 S7



Branco
8 x 60 - R860VE00C04 U9
8 x 59 - R860VE00C04 R U10
8 x 59 - R860VE00C04 R/SP U12



Branco
8 x 33 - R833VE00C04 U1
8 x 32 - R833VE00C04 R U3
8 x 32 - R833VE00C04 R/SP U5



Branco
8 x 40 - R840VE00C00 U3



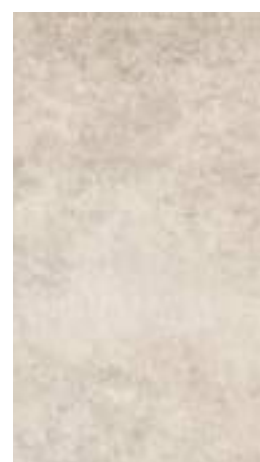
Branco
14,5 x 59 - 1560VE00C04 R S20
14,5 x 59 - 1560VE00C04 R/SP S21



Branco
10 x 59 - 1060VE00C04 R S21
10 x 59 - 1060VE00C04 R/SP S22



Branco
5 x 59 - 560VE00C04 R S22
5 x 59 - 560VE00C04 R/SP S23



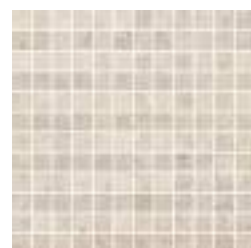
Branco
33 x 60 - 3360VE00C01 S12
32 x 59 - 3360VE00C01 R S18



Branco
33 x 60 - D3360VE00C02/1 S12
32 x 59 - D3360VE00C02/1 R S18



Branco
32 x 32 (5,2 x 5,2 aprox)
*M3333VE00C04C02/4 R U20
*M3333VE00C04C02/4 R/SP U20

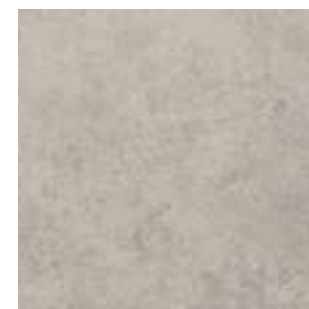


Branco
32 x 32 (2,5 x 2,5 aprox)
*M3333VE00C04/17 R U24
*M3333VE00C04/17 R/SP U24

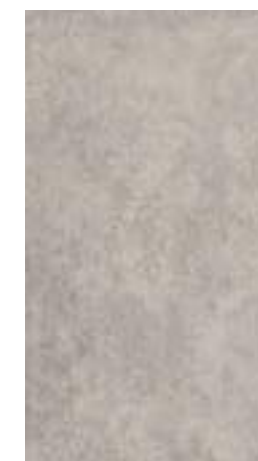
V E N E Z A
collection

cinza claro

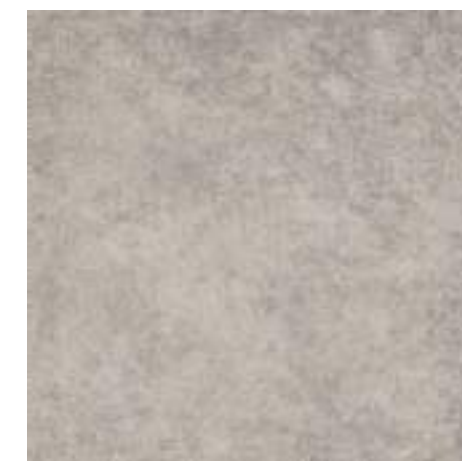
60 x 60 x 0,95 cm | 33 x 60 x 0,95 cm | 40 x 40 x 0,72 cm



Cinza Claro
40 x 40 - 4040VE22C00 S7



Cinza Claro
33 x 60 - 3360VE22C04 S12
32 x 59 - 3360VE22C04 R S18
32 x 59 - 3360VE22C04 R/SP S19



Cinza Claro
60 x 60 - 6060VE22C04 S14
59 x 59 - 6060VE22C04 R S19
59 x 59 - 6060VE22C04 R/SP S20



Cinza Claro
8 x 40 - R840VE22C00 U3



Cinza Claro
8 x 33 - R833VE22C04 U1
8 x 32 - R833VE22C04 R U3
8 x 32 - R833VE22C04 R/SP U5



Cinza Claro
8 x 60 - R860VE22C04 U9
8 x 59 - R860VE22C04 R U10
8 x 59 - R860VE22C04 R/SP U12



Cinza Claro
5 x 59 - 560VE22C04 R S22
5 x 59 - 560VE22C04 R/SP S23



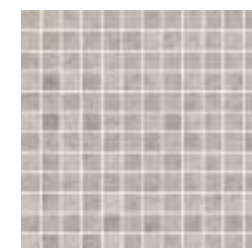
Cinza Claro
10 x 59 - 1060VE22C04 R S21
10 x 59 - 1060VE22C04 R/SP S22



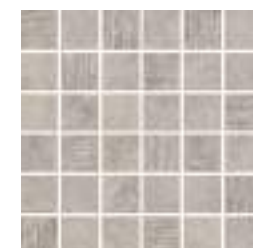
Cinza Claro
14,5 x 59 - 1560VE22C04 R S20
14,5 x 59 - 1560VE22C04 R/SP S21



Bronze
32 x 32
*M3333VE05C04/22 R U23
*M3333VE05C04/22 R/SP U23



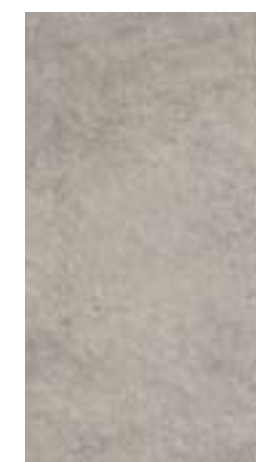
Cinza Claro
32 x 32 (2,5 x 2,5 aprox)
*M3333VE22C04/17 R U24
*M3333VE22C04/17 R/SP U24



Cinza Claro
32 x 32 (5,2 x 5,2 aprox)
*M3333VE22C04C02/4 R U20
*M3333VE22C04C02/4 R/SP U20



Cinza Claro
33 x 60 - D3360VE22C02/1 S12
32 x 59 - D3360VE22C02/1 R S18



Cinza Claro
33 x 60 - 3360VE22C01 S12
32 x 59 - 3360VE22C01 R S18



DEGRAU: Disponíveis em todos os formatos e acabamentos da série.
STEP: Available in all formats and finishings of the range.
MARCHE D'ESCALIER: Disponibles dans tous les formats et finitions de la série.

* Peça colada em rede (mosaico).
* Piece presented in frame (mosaic).
* Pièce collée sur trame (mosaïque).

* Peça colada em rede (mosaico).
* Piece presented in frame (mosaic).
* Pièce collée sur trame (mosaïque).

DEGRAU: Disponíveis em todos os formatos e acabamentos da série.
STEP: Available in all formats and finishings of the range.
MARCHE D'ESCALIER: Disponibles dans tous les formats et finitions de la série.



V E N E Z A
collection

taupe

60 x 60 x 0,95 cm | 33 x 60 x 0,95 cm | 40 x 40 x 0,72 cm



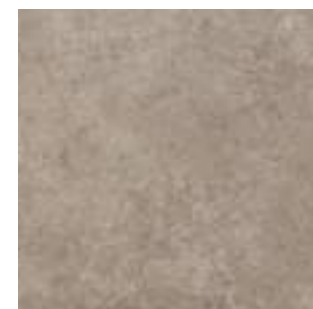
Taupe
60 x 60 - 6060VE62C04
59 x 59 - 6060VE62C04 R
59 x 59 - 6060VE62C04 R/SP

S14
S19
S20



Taupe
33 x 60 - 3360VE62C04
32 x 59 - 3360VE62C04 R
32 x 59 - 3360VE62C04 R/SP

S12
S18
S19



Taupe
40 x 40 - 4040VE62C00

S7



Taupe
8 x 60 - R860VE62C04
8 x 59 - R860VE62C04 R
8 x 59 - R860VE62C04 R/SP

U9
U10
U12



Taupe
8 x 33 - R833VE62C04
8 x 32 - R833VE62C04 R
8 x 32 - R833VE62C04 R/SP

U1
U3
U5



Taupe
8 x 40 - R840VE62C00

U3



Taupe
14,5 x 59 - 1560VE62C04 R
14,5 x 59 - 1560VE62C04 R/SP

S20
S21



Taupe
10 x 59 - 1060VE62C04 R
10 x 59 - 1060VE62C04 R/SP

S21
S22



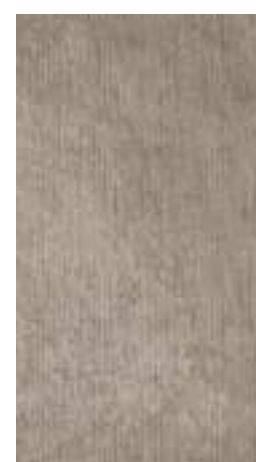
Taupe
5 x 59 - 560VE62C04 R
5 x 59 - 560VE62C04 R/SP

S22
S23



Taupe
33 x 60 - 3360VE62C01
32 x 59 - 3360VE62C01 R

S12
S18



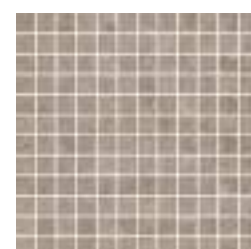
Taupe
33 x 60 - D3360VE62C02/1
32 x 59 - D3360VE62C02/1 R

S12
S18



Taupe
32 x 32 (5,2 x 5,2 aprox)
*M3333VE62C04C02/4 R
*M3333VE62C04C02/4 R/SP

U20
U20



Taupe
32 x 32 (2,5 x 2,5 aprox)
*M3333VE62C04/17 R
*M3333VE62C04/17 R/SP

U24
U24

V E N E Z A
collection

antracite

60 x 60 x 0,95 cm | 33 x 60 x 0,95 cm | 40 x 40 x 0,72 cm



Antracite
40 x 40 - 4040VE21C00

S7



Antracite
33 x 60 - 3360VE21C04
32 x 59 - 3360VE21C04 R
32 x 59 - 3360VE21C04 R/SP

S12
S18
S19



Antracite
60 x 60 - 6060VE21C04
59 x 59 - 6060VE21C04 R
59 x 59 - 6060VE21C04 R/SP

S14
S19
S20



Antracite
8 x 40 - R840VE21C00

U3



Antracite
8 x 33 - R833VE21C04
8 x 32 - R833VE21C04 R
8 x 32 - R833VE21C04 R/SP

U1
U3
U5



Antracite
8 x 60 - R860VE21C04
8 x 59 - R860VE21C04 R
8 x 59 - R860VE21C04 R/SP

U9
U10
U12



Antracite
5 x 59 - 560VE21C04 R
5 x 59 - 560VE21C04 R/SP

S22
S23



Antracite
10 x 59 - 1060VE21C04 R
10 x 59 - 1060VE21C04 R/SP

S21
S22



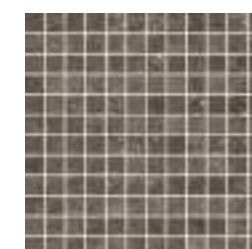
Antracite
14,5 x 59 - 1560VE21C04 R
14,5 x 59 - 1560VE21C04 R/SP

S20
S21



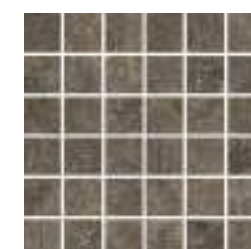
Bronze
32 x 32
*M3333VE05C04/22 R
*M3333VE05C04/22 R/SP

U23
U23



Antracite
32 x 32 (2,5 x 2,5 aprox)
*M3333VE21C04/17 R
*M3333VE21C04/17 R/SP

U24
U24



Antracite
32 x 32 (5,2 x 5,2 aprox)
*M3333VE21C04C02/4 R
*M3333VE21C04C02/4 R/SP

U20
U20



Antracite
33 x 60 - D3360VE21C02/1
32 x 59 - D3360VE21C02/1 R

S12
S18



Antracite
33 x 60 - 3360VE21C01
32 x 59 - 3360VE21C01 R

S12
S18



DEGRAU: Disponíveis em todos os formatos e acabamentos da série.
STEP: Available in all formats and finishings of the range.
MARCHE D'ESCALIER: Disponibles dans tous les formats et finitions de la série.

* Peça colada em rede (mosaico).
* Piece presented in frame (mosaic).
* Pièce collée sur trame (mosaïque).

* Peça colada em rede (mosaico).
* Piece presented in frame (mosaic).
* Pièce collée sur trame (mosaïque).

DEGRAU: Disponíveis em todos os formatos e acabamentos da série.
STEP: Available in all formats and finishings of the range.
MARCHE D'ESCALIER: Disponibles dans tous les formats et finitions de la série.



V E N E Z A
c o l l e c t i o n

b e g e

60 x 60 x 0,95 cm | 33 x 60 x 0,95 cm | 40 x 40 x 0,72 cm



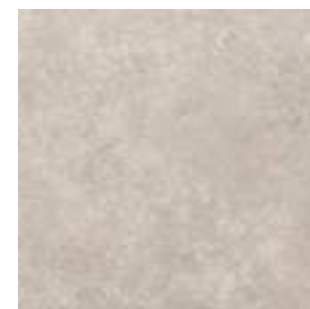
Bege
60 x 60 - 6060VE54C04
59 x 59 - 6060VE54C04 R
59 x 59 - 6060VE54C04 R/SP

S14
S19
S20



Bege
33 x 60 - 3360VE54C04
32 x 59 - 3360VE54C04 R
32 x 59 - 3360VE54C04 R/SP

S12
S18
S19



Bege
40 x 40 - 4040VE54C00

S7



Bege
8 x 60 - R860VE54C04
8 x 59 - R860VE54C04 R
8 x 59 - R860VE54C04 R/SP

U9
U10
U12



Bege
8 x 33 - R833VE54C04
8 x 32 - R833VE54C04 R
8 x 32 - R833VE54C04 R/SP

U1
U3
U5



Bege
8 x 40 - R840VE54C00

U3



Bege
14,5 x 59 - 1560VE54C04 R
14,5 x 59 - 1560VE54C04 R/SP

S20
S21



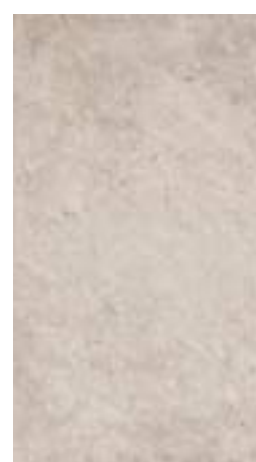
Bege
10 x 59 - 1060VE54C04 R
10 x 59 - 1060VE54C04 R/SP

S21
S22



Bege
5 x 59 - 560VE54C04 R
5 x 59 - 560VE54C04 R/SP

S22
S23



Bege
33 x 60 - 3360VE54C01
32 x 59 - 3360VE54C01 R

S12
S18



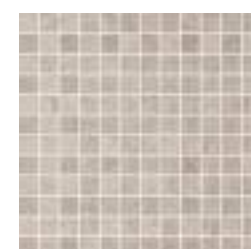
Bege
33 x 60 - D3360VE54C02/1
32 x 59 - D3360VE54C02/1 R

S12
S18



Bege
32 x 32 (5,2 x 5,2 aprox)
*M3333VE54C04C02/4 R
*M3333VE54C04C02/4 R/SP

U20
U20



Bege
32 x 32 (2,5 x 2,5 aprox)
*M3333VE54C04/17 R
*M3333VE54C04/17 R/SP

U24
U24

V E N E Z A
c o l l e c t i o n

b r o n z e

60 x 60 x 0,95 cm | 33 x 60 x 0,95 cm | 40 x 40 x 0,72 cm



Bronze
40 x 40 - 4040VE05C00

S7



Bronze
33 x 60 - 3360VE05C04
32 x 59 - 3360VE05C04 R
32 x 59 - 3360VE05C04 R/SP

S12
S18
S19



Bronze
60 x 60 - 6060VE05C04
59 x 59 - 6060VE05C04 R
59 x 59 - 6060VE05C04 R/SP

S14
S19
S20



Bronze
8 x 40 - R840VE05C00

U3



Bronze
8 x 33 - R833VE05C04
8 x 32 - R833VE05C04 R
8 x 32 - R833VE05C04 R/SP

U1
U3
U5



Bronze
8 x 60 - R860VE05C04
8 x 59 - R860VE05C04 R
8 x 59 - R860VE05C04 R/SP

U9
U10
U12



Bronze
5 x 59 - 560VE05C04 R
5 x 59 - 560VE05C04 R/SP

S22
S23



Bronze
10 x 59 - 1060VE05C04 R
10 x 59 - 1060VE05C04 R/SP

S21
S22



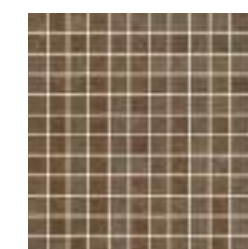
Bronze
14,5 x 59 - 1560VE05C04 R
14,5 x 59 - 1560VE05C04 R/SP

S20
S21



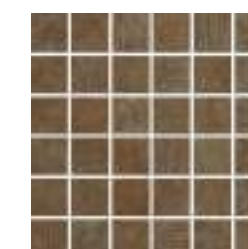
Bronze
32 x 32
*M3333VE05C04/22 R
*M3333VE05C04/22 R/SP

U23
U23



Bronze
32 x 32 (2,5 x 2,5 aprox)
*M3333VE05C04/17 R
*M3333VE05C04/17 R/SP

U24
U24



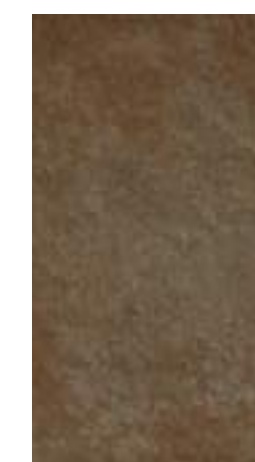
Bronze
32 x 32 (5,2 x 5,2 aprox)
*M3333VE05C04C02/4 R
*M3333VE05C04C02/4 R/SP

U20
U20



Bronze
33 x 60 - D3360VE05C02/1
32 x 59 - D3360VE05C02/1 R

S12
S18



Bronze
33 x 60 - 3360VE05C01
32 x 59 - 3360VE05C01 R

S12
S18



DEGRAU: Disponíveis em todos os formatos e acabamentos da série.
STEP: Available in all formats and finishings of the range.
MARCHE D'ESCALIER: Disponibles dans tous les formats et finitions de la série.

* Peça colada em rede (mosaico).
* Piece presented in frame (mosaic).
* Pièce collée sur trame (mosaïque).

* Peça colada em rede (mosaico).
* Piece presented in frame (mosaic).
* Pièce collée sur trame (mosaïque).

DEGRAU: Disponíveis em todos os formatos e acabamentos da série.
STEP: Available in all formats and finishings of the range.
MARCHE D'ESCALIER: Disponibles dans tous les formats et finitions de la série.






Características Técnicas

Technical Characteristics • Caractéristiques techniques

| | Norma Norms • Normes EN 14411: 2012 Anexo G - Bl a | Valores prescritos na norma Standard required by the norms Valeur prescrite de la norme | Valores Cliper Cliper values Données Cliper |
|--|---|---|--|
| DIMENSÕES E ASPECTO DE SUPERFÍCIE Dimensions and surface aspect • Dimensions et aspect de surface | | | |
| A) Desvio máximo da largura e do comprimento para dimensões de fabrico Dimension tolerance • Tolérance dimensionnelle | | ± 0,6 % ; ± 2,0mm | ± 0,25% |
| B) Desvio máximo da espessura Thickness tolerance • Tolérance de l'épaisseur | | ± 5 % ; 0,5mm | ± 0,30% |
| C) Desvio máximo na rectitude das arestas Sides Straightness tolerance • Tolérance de la rectilignité des bords | | ± 0,5 % ; ± 1,5mm | ± 3,0% |
| D) Desvio máximo na ortogonalidade Rectangularity tolerance • Tolérance de l'orthogonalité | | ± 0,5 % ; ± 2,0mm | ± 0,30% |
| E) Desvio máximo na planaridade Flatness tolerance • Tolérance de la planéité | ISO 10545 - 2 | | |
| i) Curvatura Central Central curvature tolerance • Tolérance courbure centrale | | ± 0,5 % ; ± 2,0mm | ± 0,30% |
| ii) Curvatura Lateral Lateral curvature tolerance • Tolérance courbure latérale | | ± 0,5 % ; ± 2,0mm | ± 0,30% |
| iii) Empeno em relação à diagonal Diagonal warping tolerance • Tolérance de la flèche diagonale | | ± 0,5 % ; ± 2,0mm | ± 0,30% |
| F) Aspecto superficial Surface appearance • Aspect superficiel | | 95% sem defeitos 95% without defects 95% sans défauts | |
| ABSORÇÃO DE ÁGUA Water absorption • Absorption d'eau | ISO 10545-3 | < 0,5% e máx. individual 0,6% < 0,5% and max. for one piece 0,6% < 0,5% et max. pour une pièce 0,6% | E ≤ 0,30% |
| TENSÃO DE RUPTURA Rupture modulus • Module de rupture | ISO 10545-4 | Espessura ≥ 7,5mm Mínimo 1300N Thickness ≥ 7,5mm Least 1300N Epaisseur ≥ 7,5mm Minimum 1300N | Média 1500N Average 1500N Moyenne 1500N |
| RESISTÊNCIA MECÂNICA À FLEXÃO Flexion resistance • Résistance à la flexion | ISO 10545-4 | Mínima 35 N/mm ² At least 35 N/mm ² Minimum 35 N/mm ² Mínimo individual 32 N/mm ² Least for one piece 32 N/mm ² Minimum pour une pièce 32 N/mm ² | Média 40 N/mm ² Average 40 N/mm ² Moyenne 40 N/mm ² |
| RESISTÊNCIA ÀS MANCHAS Stain resistance • Résistance aux tâches | ISO 10545-14 | Classe 3 (mín) At least Class 3 Classe 3 ou plus | Classe 3 (mín) At least Class 3 Classe 3 ou plus |
| RESISTÊNCIA QUÍMICA Chemical Resistance • Résistance aux agents chimiques | | | |
| i) Ácidos e Bases Acids and alkalis • Acides / Bases | | Produto por produto Product by product Produit par produit | Produto por produto Product by product Produit par produit |
| ii) Produtos Domésticos de Limpeza Cleaning home keeping chemicals • Produits ménagers | ISO 10545-13 | Classe GB (mín) At least Class GB Classe GB ou plus | Classe GB (mín) At least Class GB Classe GB ou plus |
| iii) Aditivos para Água de Piscinas Swimming pools salts • Produits pour piscines | | Classe GB (mín) At least Class GB Classe GB ou plus | Classe GB (mín) At least Class GB Classe GB ou plus |
| RESISTÊNCIA AO GELO Frost resistance • Résistance au gel | ISO 10545-12 | Exigido Required Exigible | Conforme Guaranteed Conforme |
| RESISTÊNCIA AO CHOQUE TÉRMICO Thermal shock resistance • Résistance au choc thermique | ISO 10545-9 | Pedido Requested Demandé | Conforme Guaranteed Conforme |
| RESISTÊNCIA À ABRASÃO Resistance to surface abrasion (PEI) • Résistance à l'abrasion | ISO 10545-7 | Produto por produto Product by product Produit par produit | III a V |

EMBALAGEM E PESO / PACKING AND WEIGHT / EMBALLAGE ET POIDS

| formato (cm) size format | acabamento finish finition | espessura (mm) thickness épaisseur | peças/caixa pieces/box pièces/boîte | m ² /caixa (aprox.) sqm/box m ² /boîte | caixas/pal box/pal boîtes/pal | m ² /pal sqm/pal m ² /pal | ^o kg/caixa kg/box kg/boîte | ^o kg/pal kg/pal kg/pal | pal/contentor pal/container pal/conteneur | pal/camião pal/truck pal/camion |
|--------------------------------|----------------------------------|--|---|--|-------------------------------------|---|---|---|---|---------------------------------------|
| 5 x 59 | R;R/SP | 9,50 | 36 | 1,06 | 48 | 50,88 | 21,50 | 1047 | 22 | 22 |
| 10 x 59 | R;R/SP | 9,50 | 17 | 1,00 | 48 | 48,00 | 20,00 | 975 | 22 | 24 |
| 14,5 x 59 | R;R/SP | 9,50 | 12 | 1,03 | 48 | 49,44 | 21,00 | 1023 | 22 | 22 |
| 40 x 40 | | 7,20 | 8 | 1,28 | 36 | 46,08 | 20,00 | 738 | 33 | 33 |
| 32 x 59 | R;R/SP | 9,50 | 6 | 1,14 | 40 | 45,60 | 23,80 | 912 | 22 | 26 |
| 33 x 60 | | 9,50 | 6 | 1,20 | 40 | 48,00 | 24,70 | 996 | 22 | 24 |
| 59 x 59 | R;R/SP | 9,50 | 3 | 1,04 | 36 | 37,44 | 22,00 | 810 | 29 | 29 |
| 60 x 60 | | 9,50 | 3 | 1,08 | 36 | 38,88 | 22,50 | 830 | 29 | 29 |

|  decorados mosaicos decorations mosaics décors mosaïques | formato (cm) size format | peças/caixa pieces/box pièces/boîte |  degraus steps marches d'escalier | formato (cm) size format | peças/caixa pieces/box pièces/boîte |  rodapés skirtings plinthes | formato (cm) size format | peças/caixa pieces/box pièces/boîte |
|--|--------------------------------|---|---|--------------------------------|---|--|--------------------------------|---|
| | 32 x 32 x 0,95 *** | 10 | | 30 x 40 x 0,72 | 8 | | 8 x 32 x 0,95 | 28 |
| | 33 x 60 x 0,95 *** | 6 | | 30 x 60 x 0,95 | 6 | | 8 x 33 x 0,95 | 28 |
| | 32 x 59 x 0,95 *** | 6 | | | | | 8 x 40 x 0,72 | 29 |
| | | | | | | | 8 x 59 x 0,95 | 22 |
| | | | | | | | 8 x 60 x 0,95 | 22 |

*** Mesma quantidade de peças/caixa nos acabamentos Rectificado e Rectificado Semi-Polido

*** Same quantity of pieces/box for the finish Rectified and Rectified Semi-Polished

*** Même quantité de pièces/boîte dans les finitions Rectifié et Rectifié Semi-Poli

(1) Valor médio

(1) Average data

(1) Valeur moyenne

V E N E Z A
collection



CLIPER Cerâmica S.A.
Parque Industrial da Figueira da Foz | Rua das Olaias 119
3090-463 Lavos | Portugal
T +351 233 402 200 | F +351 233 402 209
geral@cliper.pt | www.cliper.pt

